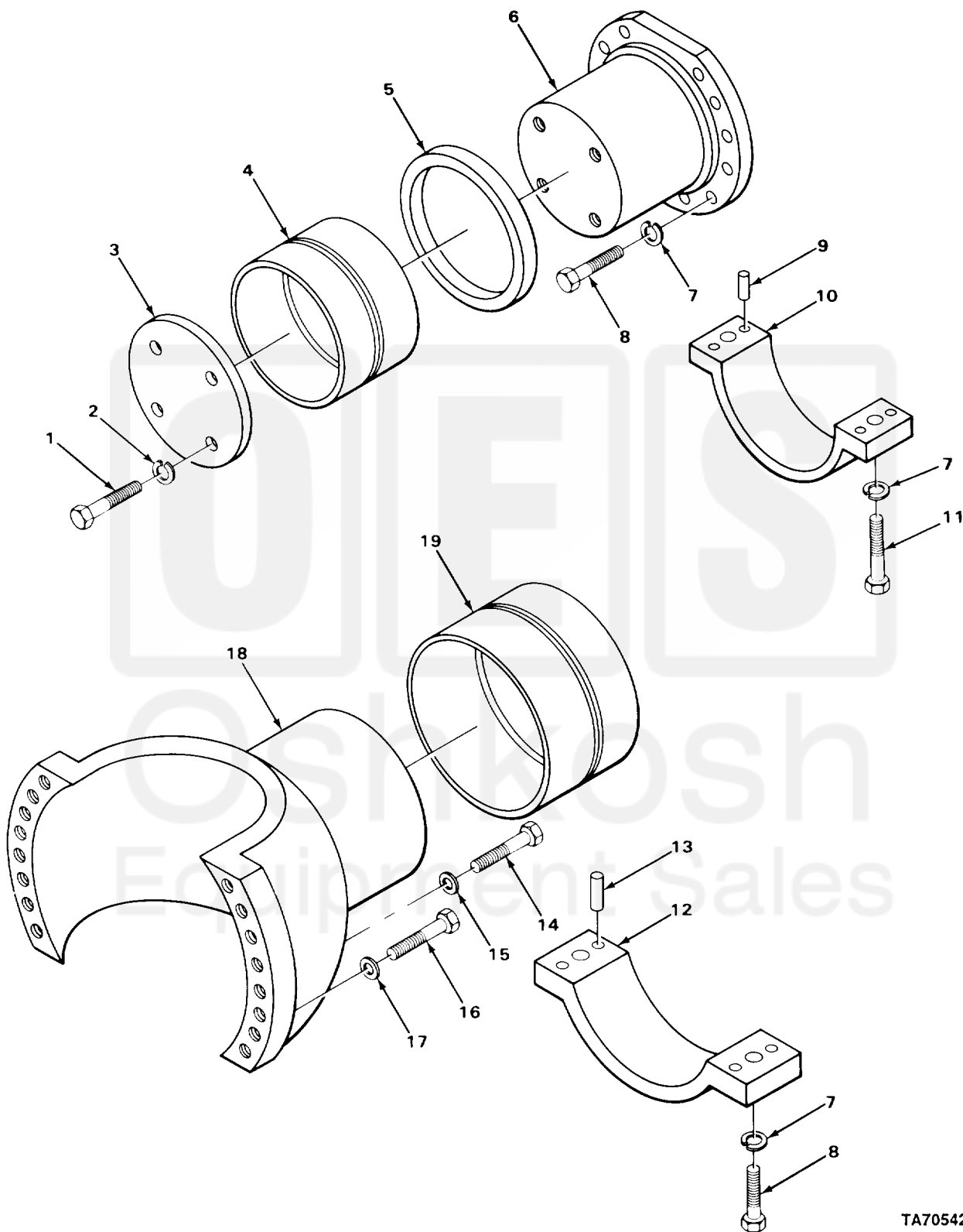


SECTION II

TM 10-3930-242-24P



TA705423

FIGURE 97. TRUNNIONS, INNER AND OUTER.

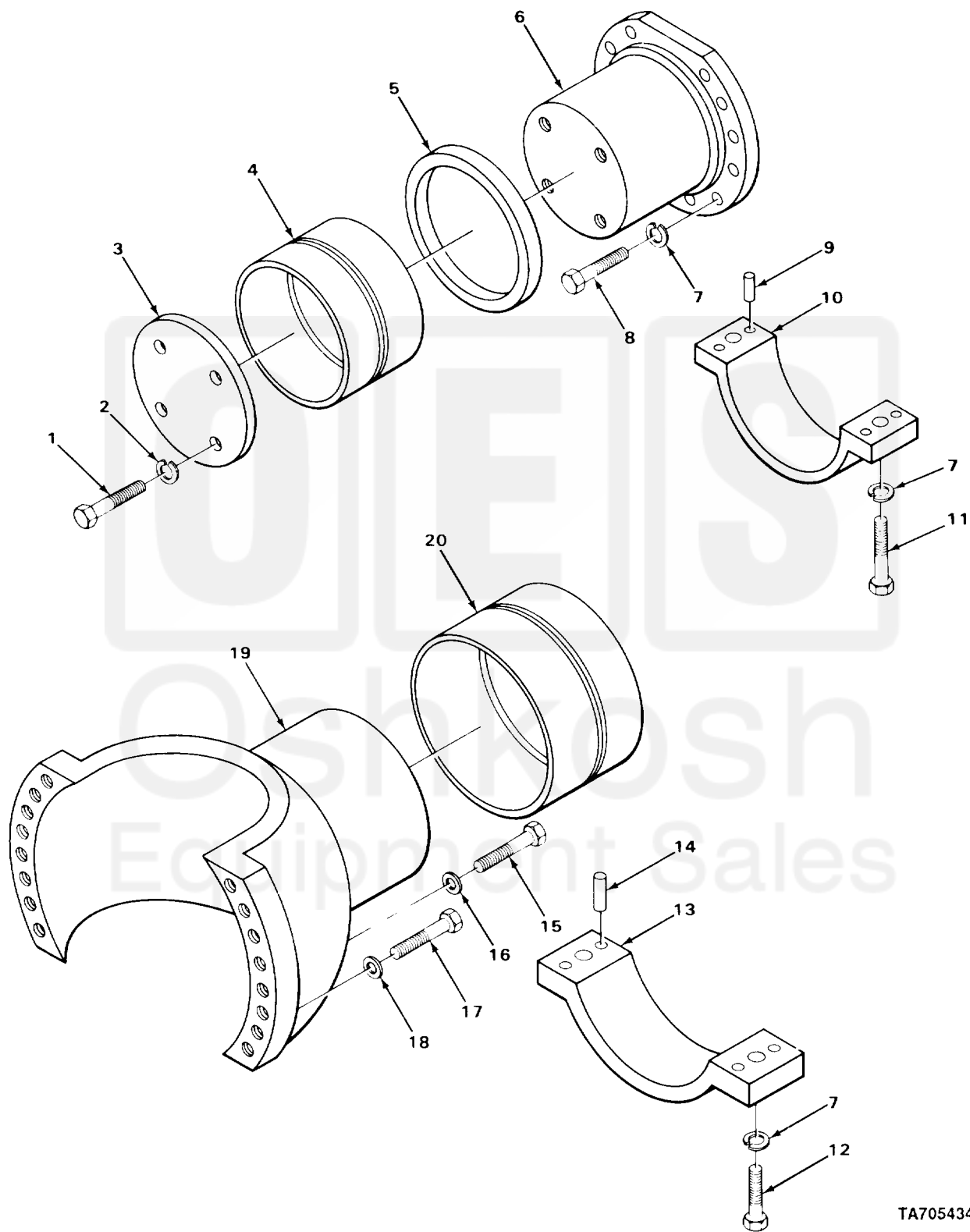
(1) ITEM NO	(2) SMR CODE	(3) CAGEC	(4) PART NUMBER	(5) DESCRIPTION AND USABLE ON CODES (UOC)	(6) QTY
GROUP 1000 FRONT AXLE ASSEMBLY					
FIG. 97 TRUNNIONS, INNER AND OUTER					
1	PFHZZ	96906	MS90728-185	.SCREW,CAP,HEXAGON H PLATE MTG	8
2	PFHZZ	96906	MS35338-51	.WASHER,LOCK TRUNNION MTG	8
3	XDHZZ	03677	LT1-543	.PLATE BEARING RETAINING	2
4	PAHZZ	03677	LT1-777	.BEARING,SLEEVE	2
5	PAHZZ	03677	LT1-527	.SPACER,RING TRUNNION BEARING	2
6	PAHZZ	03504	118147	.TRUNNION,PIVOT	2
7	PFHZZ	96906	MS35338-50	.WASHER,LOCK	38
8	XDHZZ	03504	118179	.SCREW,CAP,HEXAGON H	38
9	PFHZZ	96906	MS16555-392	.PIN,STRAIGHT,HEADLE BEARING PLATE	8
10	XDHZZ	03677	LT1-539	.CAP,AXLE MOUNT	2
11	PFHZZ	96906	MS90727-172	.SCREW,CAP,HEXAGON H CAP MOUNTING	8
12	XDHZZ	03677	LT1-538	.CAP,PILLOW BLOCK	2
13	PFHZZ	96906	MS16555-394	.PIN,STRAIGHT,HEADLE BEARING PLATE	8
14	PAHZZ	03504	118178	.BOLT,MACHINE TRUNNION MOUNTING	4
15	PAHZZ	53496	C0UH224	.WASHER,FLAT TRUNNION MOUNTING	4
16	PAHZZ	03504	118177	.SCREW,CAP,HEXAGON H TRUNNION MTG	24
17	PAHZZ	03504	112284	.WASHER,FLAT TRUNNION MTG	24
18	XDHZZ	12603	118146	.TRUNNION,CENTER PIV	2
19	PFHZZ	03677	LT1-778	.BEARING,SLEEVE	2

END OF FIGURE



SECTION II

TM 10-3930-242-24P



TA705434

FIGURE 108. TRUNNIONS, INNER AND OUTER

Current part is item (19) on diagram. Available at www.oshkoshequipment.com

ITEM NO	SMR CODE	CAGEC	PART NUMBER	DESCRIPTION AND USABLE ON CODES (UOC)	QTY
GROUP 1100 REAR AXLE ASSEMBLY					
FIG. 108 TRUNNIONS, INNER AND OUTER					
1	PFHZZ	96906	MS90728-185	.SCREW,CAP,HEXAGON H PLATE MOUNTING	8
2	PFHZZ	96906	MS35338-51	.WASHER,LOCK PLATAE MTG	8
3	XBHZZ	04285	S67952	.PLATE,BEARING RETAINER	2
4	PAHZZ	03677	LT1-777	.BEARING,SLEEVE AXLE	2
5	PAHZZ	03677	LT1-527	.SPACER,RING TRUNNION MTG	2
6	PAHZZ	03504	118147	.TRUNNION,PIVOT	2
7	PFHZZ	96906	MS35338-50	.WASHER,LOCK	19
8	XDHZZ	03504	118179	.SCREW,CAP,HEXAGON H TRUNNION MOUNTING	15
9	PFHZZ	96906	MS16555-392	.PIN,STRAIGHT,HEADLE BEARING PLATE	8
10	XAHZZ	04285	C67637X	.AXLE MOUNTING CAP	2
11	PFHZZ	96906	MS90727-169	.SCREW,CAP,HEXAGON H CAP MTG	4
12	PFHZZ	96906	MS90727-168	.SCREW,CAP,HEXAGON H AXLE MTG CAP	4
13	XAHZZ	04285	C67639X	.AXLE MOUNTING CAP	2
14	PFHZZ	96906	MS16555-392	.PION,STRAIGHT,HEADLE BEARING CAP	8
15	PAHZZ	03504	118178	.BOLT,MACHINE TRUNNION MTG	2
16	PAHZZ	53496	HD224	.WASHER,FLAT TRUNNION MTG	17
17	PAHZZ	03504	118177	.SCREW,CAP,HEXAGON H TRUNNION MTG	48
18	PAHZZ	03504	112284	.WASHER,FLAT TRUNNION MTG	52
19	XDHZZ	12603	118146	.TRUNNION,CENTER PIV	2
20	PFHZZ	03677	LT1-778	.BEARING,SLEEVE AXLE	2

END OF FIGURE



Current part is item (19) on diagram. Available at www.oshkoshequipment.com